

THE
**Garratt
Collection**

Apartments

EARLSFIELD SW18



A new
character and
identity to
the residential
street scene.



Protection for new-build
home buyers



Enduringly stylish & built to last

Kitchen

- + Handleless fitted kitchens by ROK European with dual colour finish in Pearl Indigo Blue matt lacquer base units and White matt lacquered wall units
- + Quality appliances by Bosch to include multi-function electric oven, integrated microwave, and induction hob in black finish. Integrated dishwasher and fridge / freezer
- + Freestanding washer / dryer within utility cupboard
- + White composite worktops with 100mm upstand and splash back to hob
- + Under mounted stainless-steel sink with chrome mixer tap and independent, detachable stainless-steel drainer
- + Recessed under unit LED lighting
- + Hafele pull out waste bin

Bathroom / en-suite

- + Contemporary sanitaryware by Saneux in white with chrome fittings
- + Semi countertop basin with click clack waste. Wall hung W/C with concealed cistern soft close seat and cover
- + White composite vanity worktops with 100mm upstand and full height fitted mirror above (bathroom) and feature mirror fronted storage cabinet (en-suite)
- + Recessed towel box
- + Steel bath with tiled bath panel (bathroom)
- + Hinged shower screen with chrome frame with 20cm circular shower head over bath and wand secondary handset (bathroom)
- + Shower enclosure, 20mm chrome finish shower head and secondary handset - (en-suite)
- + European wall tiling to selected areas
- + Heated towel rail - thermostatically controlled - chrome finish
- + Mechanical ventilation system
- + Shaver point - chrome finish

Windows

- + Composite (powder coated externally, wood internally) double glazed sealed units

Finishes

- + Fitted wardrobes by Portico to bedroom one
- + Painted walls and ceilings finished with a white emulsion by Dulux. White satinwood paint to internal joinery
- + Contemporary square edged architrave and skirting boards with square routed shadow
- + White painted internal doors with four feature horizontal grooves
- + Lever door handles - polished chrome finish

Heating

- + Via communal system (gas boiler). Underfloor heating with zoned thermostats, heat interface unit and prepayment Kurve app individual to each apartment

Lighting

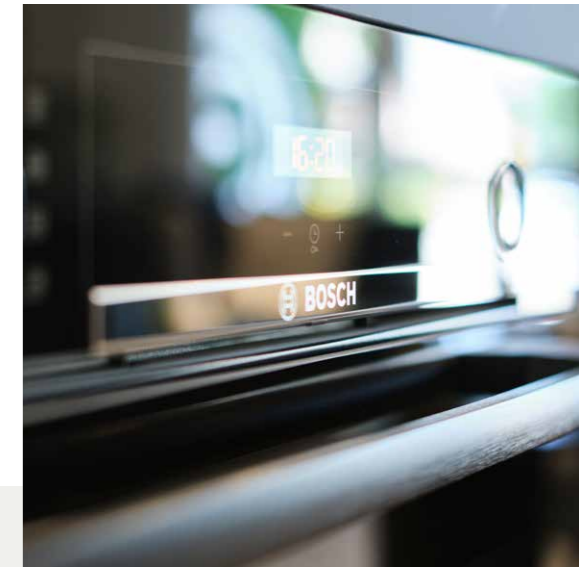
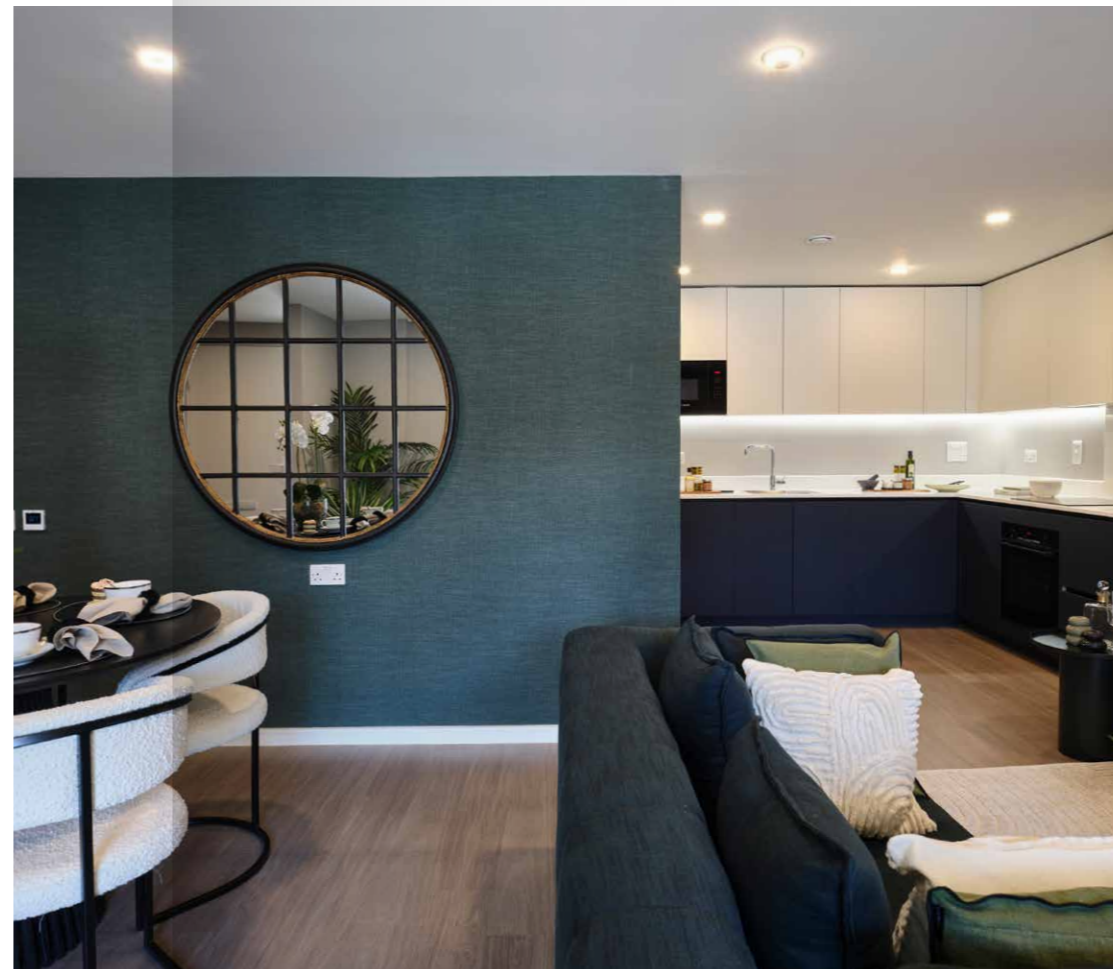
- + Recessed LED down lighters by Lumi Plugin
- + Nordlux wall light to private outdoor space

Flooring

- + Karndean flooring to hall and living / dining / kitchen*
- + Fitted Cormar Carpet to all bedrooms* (Primo Plus range)
- + Porcelain tiled flooring to bathroom and en-suite

Home entertainment / communication

- + TV / FM outlet points to living room and bedroom one
- + Communal satellite aerial (Sky Q) - purchasers own decoder required
- + Communal terrestrial digital television aerial
- + Telephone outlet points to living room and bedroom one
- + Wired for fibre broadband from Hyperoptic and BT - purchaser subscription required
- + USB charging points to bedroom one and kitchen



Communal facilities

- + Communal passenger lift with brushed stainless-steel lift car
- + Smooth plastered walls and ceramic tiled flooring to communal entrance foyer, fitted carpet to communal hallways and staircase
- + Lockable post box to communal foyer (excluding plots B0.01 & B0.05 who have letterbox to own front door)
- + Communal cycle store

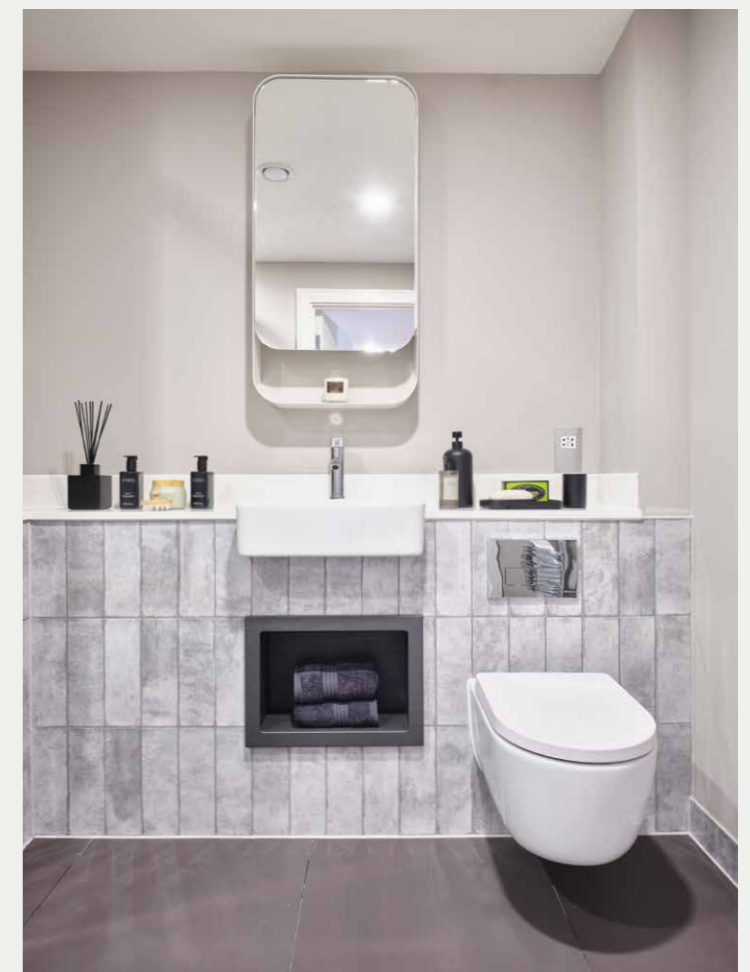
Safety & security

- + Lumi Plugin mains operated smoke detector
- + Heat detector within kitchen
- + Provision for intruder alarm system (future installation)
- + Fire sprinkler system

Warranty

- + Ten-year LABC warranty

*Choice available subject to the stage of construction
The Company employs a policy of continuous improvement, and it reserves the right to alter or amend the specification as necessary and without prior notice.

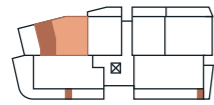




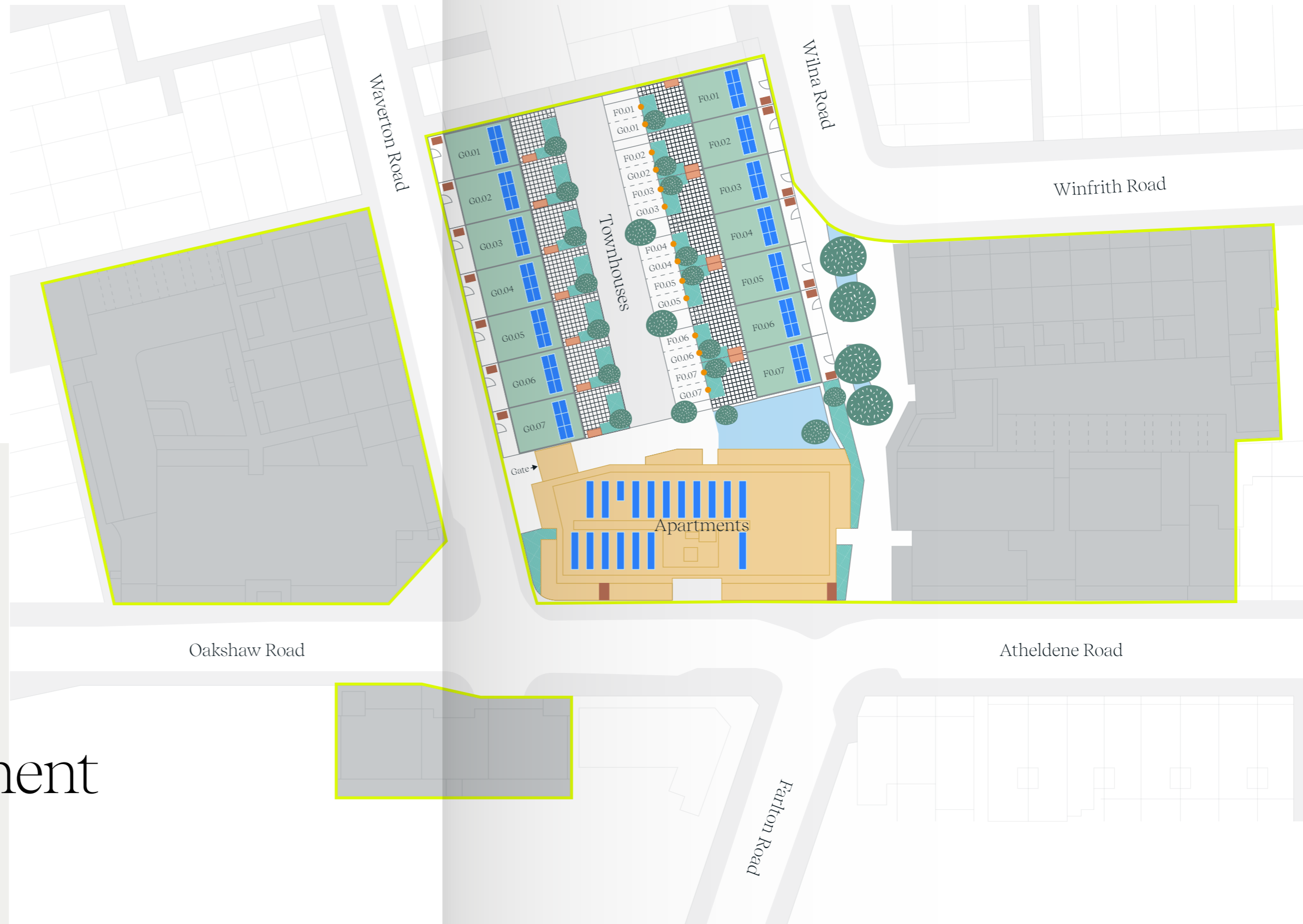
Key

- Site Boundary Line
- Townhouse
- Apartments
- Solar Panels
- Cycle Store
- Refuse Store
- Play Areas
- Car Park Bay
- EVC point
- X Lift

Ground Floor



Apartment
Communal Refuse Store
and Cycle Store



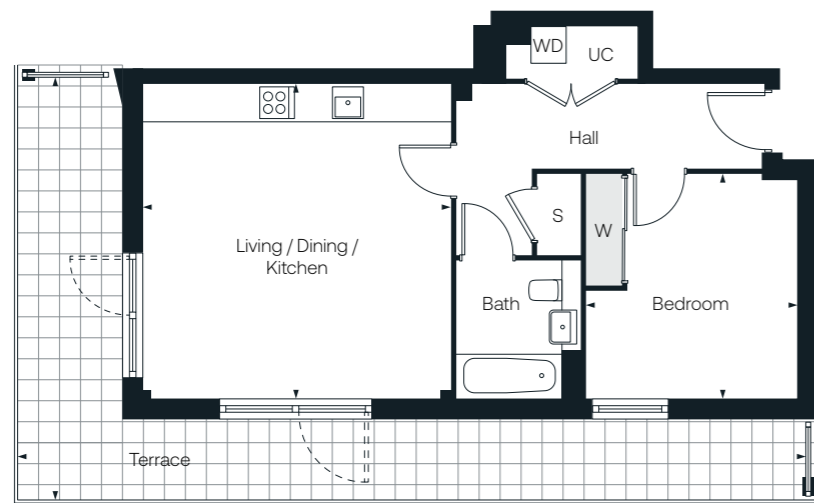
Development overview

Style 01

1 bedroom

54.6 m² / 587 ft²

Plot: B4.01



Living / Dining / Kitchen	5063mm x 4970mm / 16'8" x 16'4"
Bedroom	3612mm x 3398mm / 11'10" x 11'2"
Bathroom	
Terrace	12790mm x 6894mm / 42' x 22'8"

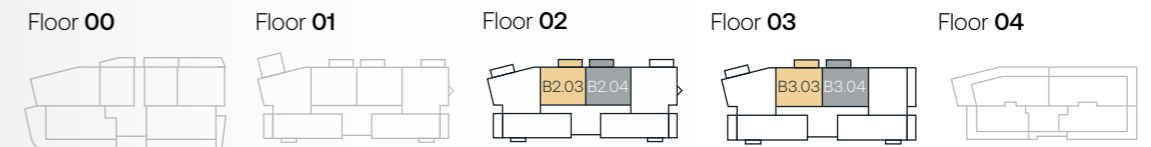
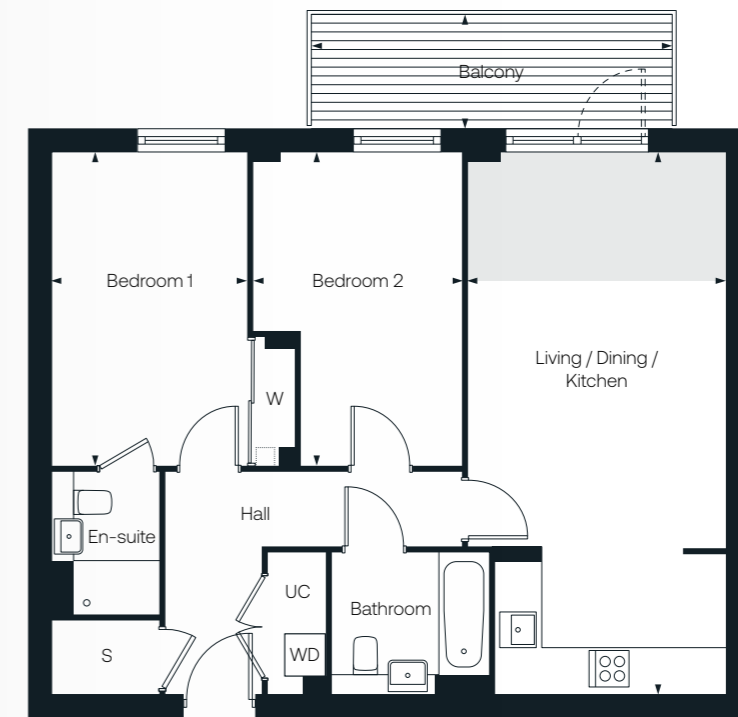
- S / store
- UC / utility cupboard
- W / wardrobe
- WD / washer dryer
- Reduced ceiling height

Style 02

2 bedroom

72.5 m² / 780 ft²

Plot: B2.03 / B2.04 / B3.03 / B3.04



Living / Dining / Kitchen	7638mm x 3642mm / 25'1" x 12'
Bedroom 1	4388mm x 2750mm / 14'5" x 9'1"
En-suite	
Bedroom 2	4388mm x 2963mm / 14'5" x 9'8"
Bathroom	
Balcony	5063mm x 1550mm / 16'8" x 5'1"

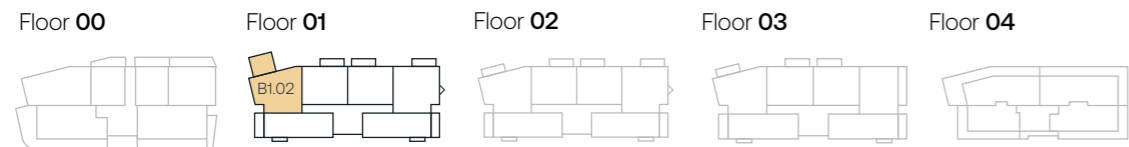
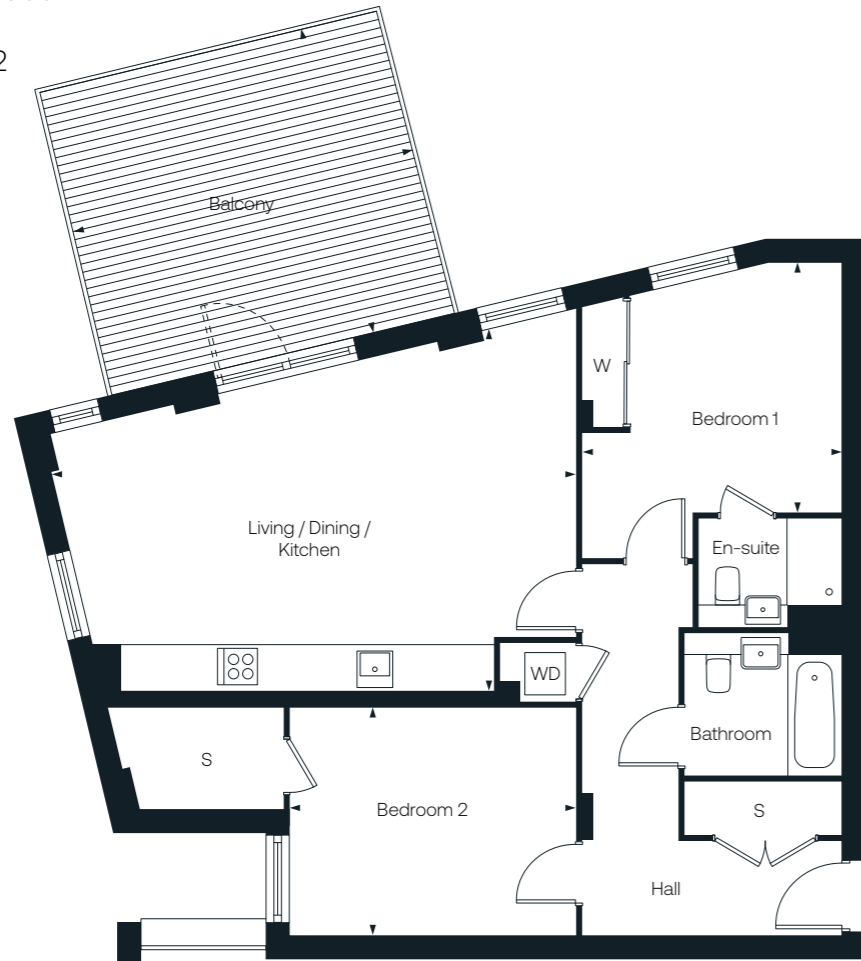
- S / store
- UC / utility cupboard
- W / wardrobe
- WD / washer dryer
- Handed plot
- Reduced ceiling height to floor 3 only
- SVP location on handed plots

Style 03

2 bedroom

84.5 m² / 909 ft²

Plot: B1.02



Living / Dining / Kitchen	7361mm x 5071mm / 24'2" x 16'8"
Bedroom 1	3645mm x 3507mm / 12' x 11'6"
En-suite	
Bedroom 2	4024mm x 3236mm / 13'3" x 10'8"
Bathroom	
Balcony	4944mm x 4386mm / 16'3" x 14'5"

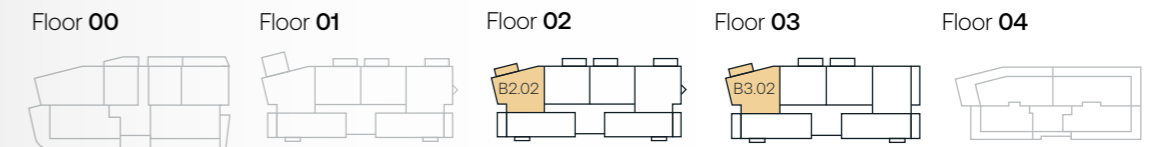
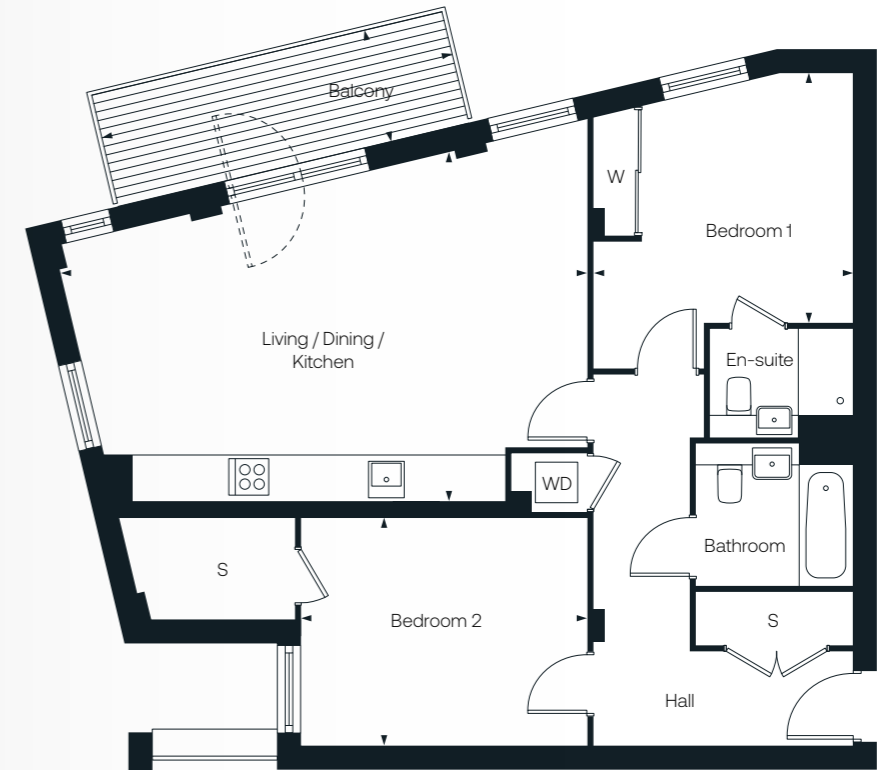
S / store
W / wardrobe
WD / washer dryer located in utility cupboard

Style 04

2 bedroom

84.5 m² / 909 ft²

Plot: B2.02 / B3.02



Living / Dining / Kitchen	7392mm x 4896mm / 24'3" x 16'1"
Bedroom 1	3645mm x 3507mm / 12' x 11'6"
En-suite	
Bedroom 2	4024mm x 3236mm / 13'3" x 10'8"
Bathroom	
Balcony	5063mm x 1550mm / 16'8" x 5'1"

S / store
w / wardrobe
WD / washer dryer located in utility cupboard

Style 05

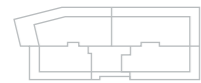
2 bedroom

72.5 m² / 780 ft²

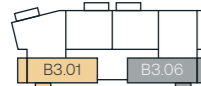
Plot: B1.01 / B1.06 / B3.01* / B3.06*



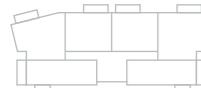
Floor 04



Floor 03



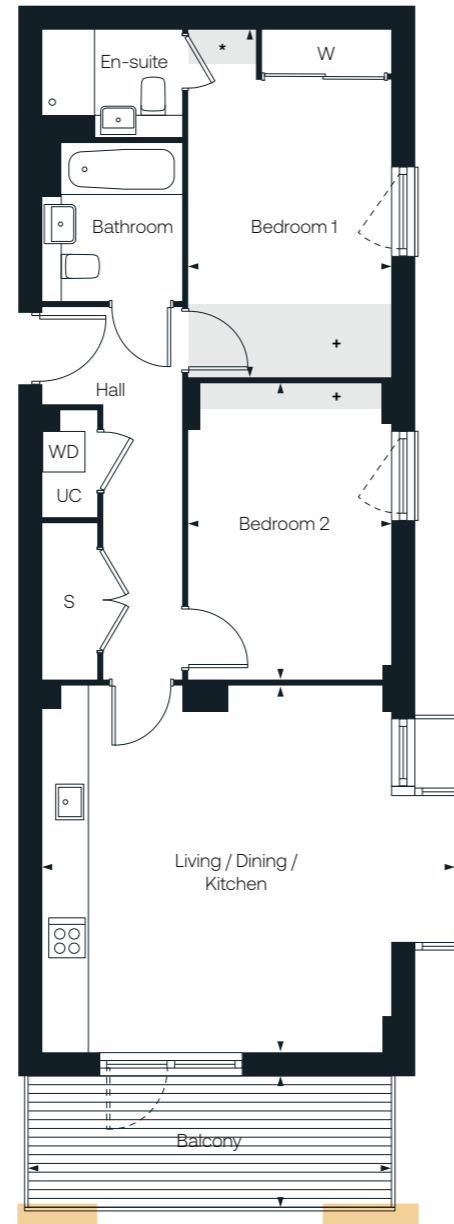
Floor 02



Floor 01



Floor 00



Living / Dining / Kitchen	5821mm x 5142mm / 19'1" x 16'11"
Bedroom 1	4884mm x 2826mm / 16'1" x 9'4"
En-suite	
Bedroom 2	4143mm x 2826mm / 13'7" x 9'4"
Bathroom	
Balcony	5041mm x 1560mm / 16'7" x 5'2"

S / store
 UC / utility cupboard
 W / wardrobe
 WD / washer dryer

- Handed plot
- These plots have balcony pillars
- Reduced ceiling height to floor 3 only**

Style 06

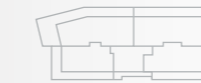
2 bedroom

72.5 m² / 780 ft²

Plot: B2.01 / B2.06



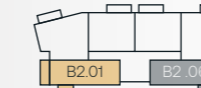
Floor 04



Floor 03



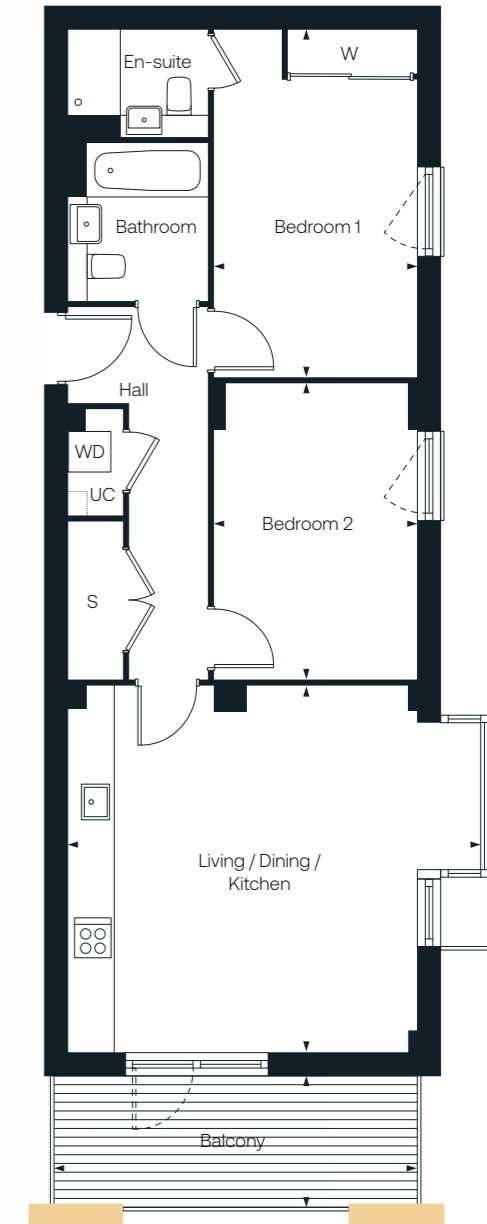
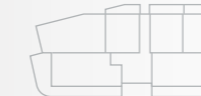
Floor 02



Floor 01



Floor 00



Living / Dining / Kitchen	5821mm x 5142mm / 19'1" x 16'11"
Bedroom 1	4884mm x 2819mm / 16'1" x 9'3"
En-suite	
Bedroom 2	4143mm x 2819mm / 13'7" x 9'3"
Bathroom	
Balcony	5062mm x 1560mm / 16'8" x 5'2"

S / store
 UC / utility cupboard
 W / wardrobe
 WD / washer dryer

- Handed plot
- These plots have balcony pillars
- SVP location on handed plot

Style 07

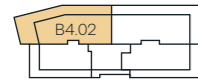
2 bedroom

83.1 m² / 894 ft²

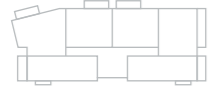
Plot: B4.02



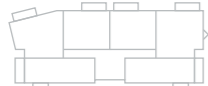
Floor 04



Floor 03



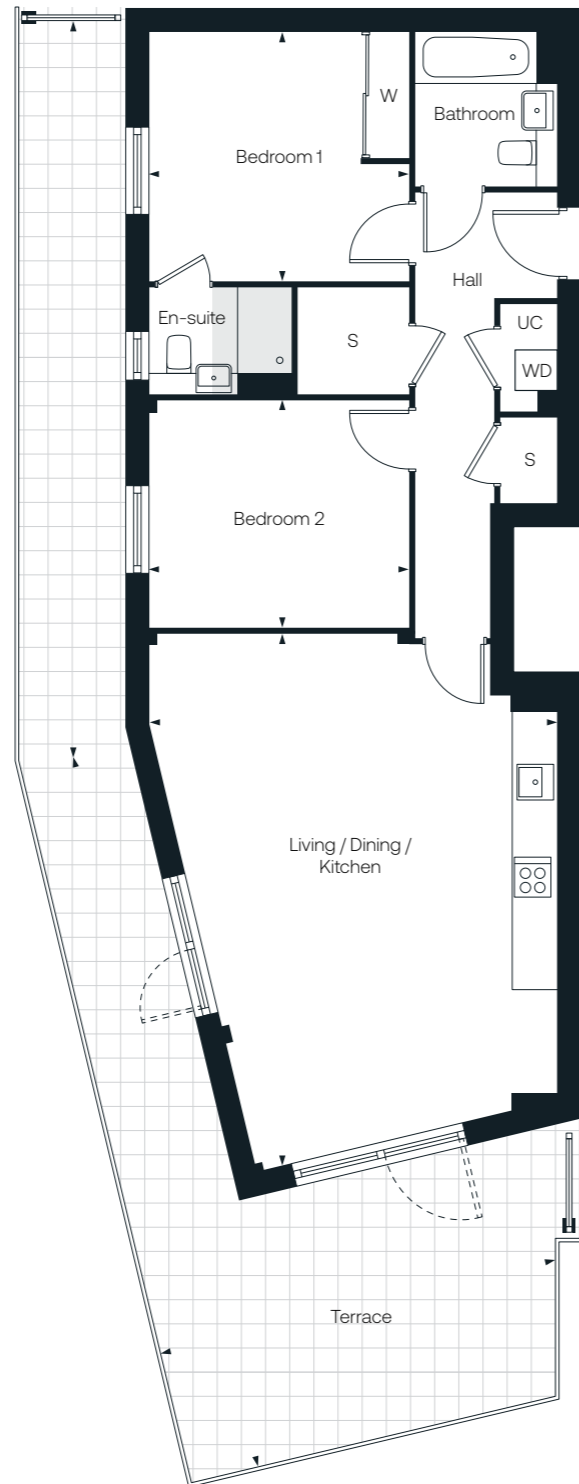
Floor 02



Floor 01



Floor 00



Living / Dining / Kitchen	7479mm x 5752mm / 24'7" x 18'11"
Bedroom 1	3624mm x 3540mm / 11'11" x 11'7"
En-suite	
Bedroom 2	3652mm x 3180mm / 12' x 10'5"
Bathroom	
Terrace	20400mm x 5700mm / 66'11" x 18'8"

S / store
 UC / utility cupboard
 W / wardrobe
 WD / washer dryer

● Reduced ceiling height

Style 08

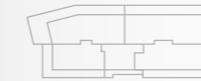
2 bedroom

91.1 m² / 980 ft²

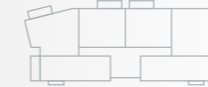
Plot: B0.01



Floor 04



Floor 03



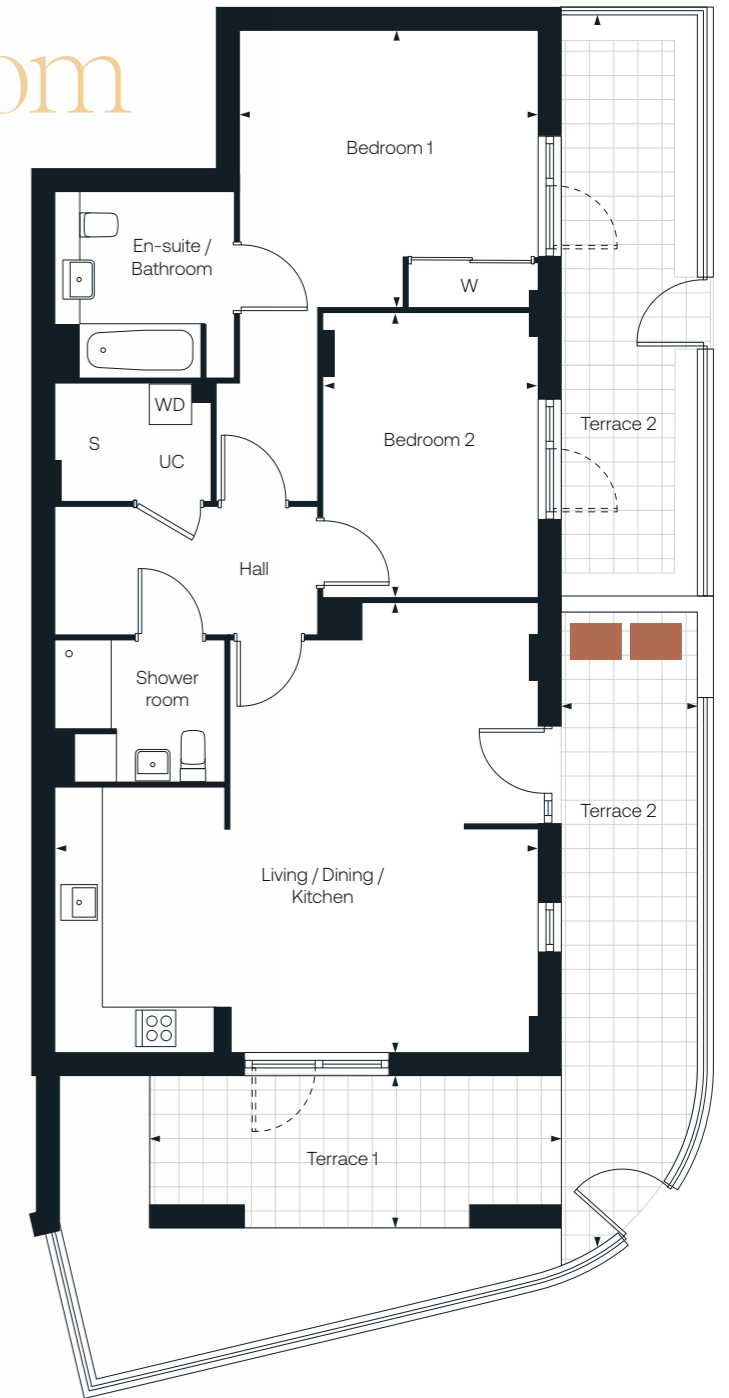
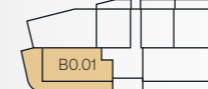
Floor 02



Floor 01



Floor 00



Living / Dining / Kitchen	6788mm x 6285mm / 22'3" x 20'7"
Bedroom 1	4173mm x 3883mm / 13'8" x 12'9"
En-suite / Bathroom	
Bedroom 2	3996mm x 3007mm / 13'1" x 9'10"
Shower room	
Terrace 1	5840mm x 2138mm / 19'2" x 7'
Terrace 2	17335mm x 1869mm / 56'11" x 6'2"

S / store
 UC / utility cupboard
 W / wardrobe
 WD / washer dryer
 Refuse area

Style 09

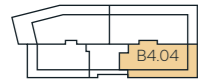
2 bedroom

70.7 m² / 761 ft²

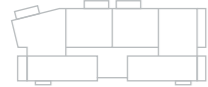
Plot: B4.04



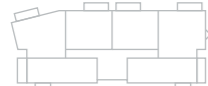
Floor 04



Floor 03



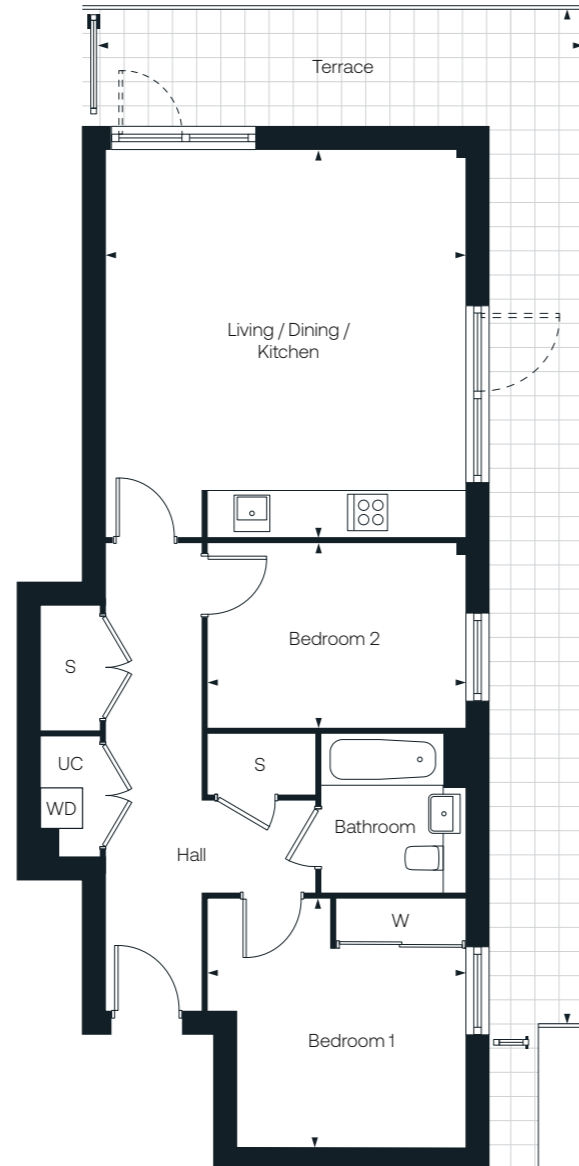
Floor 02



Floor 01



Floor 00



Living / Dining / Kitchen 5437mm x 5063mm / 17'10" x 16'7"

Bedroom 1 3613mm x 3524mm / 11'10" x 11'7"

Bedroom 2 3613mm x 2585mm / 11'10" x 8'6"

Bathroom

Terrace 14336mm x 7083mm / 47' x 23'3"

S / store

UC / utility cupboard

W / wardrobe

WD / washer dryer

Style 10

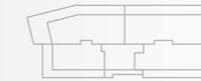
2 bedroom

97.3 m² / 1047 ft²

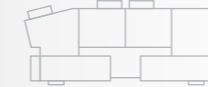
Plot: B0.05



Floor 04



Floor 03



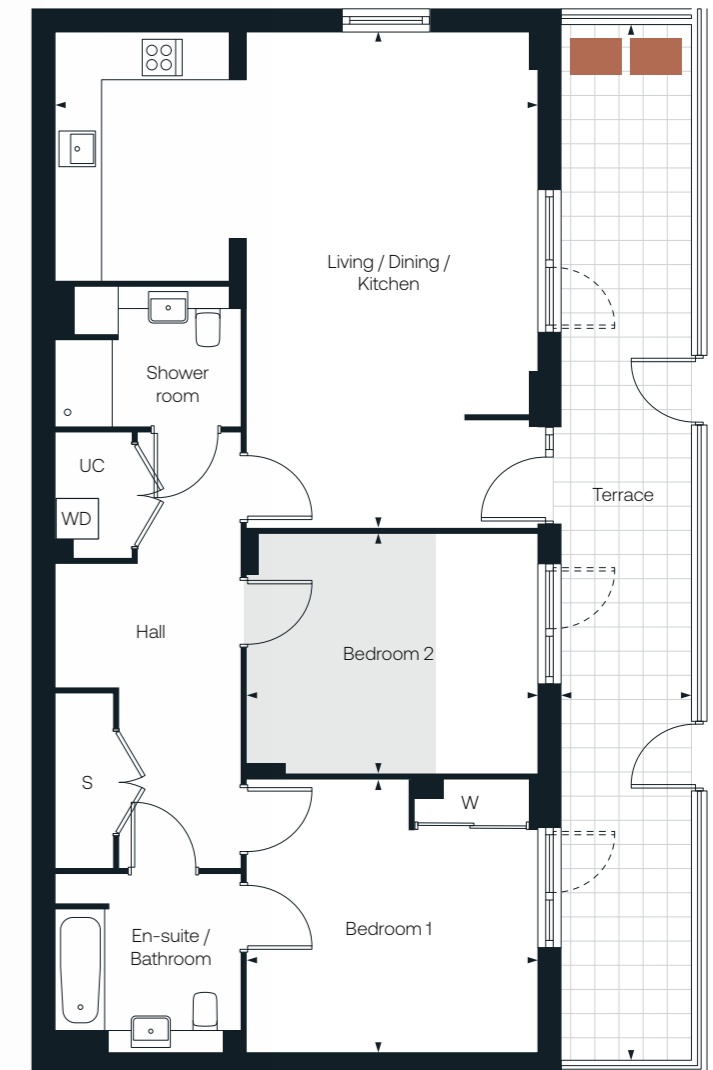
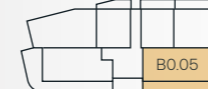
Floor 02



Floor 01



Floor 00



Living / Dining / Kitchen 6984mm x 6794mm / 22'11" x 22'3"

Bedroom 1 4088mm x 3830mm / 13'5" x 12'7"

En-suite / Bathroom

Bedroom 2 4088mm x 3350mm / 13'5" x 11'

Shower room

Terrace 14748mm x 1767mm / 48'5" x 5'9"

S / store

UC / utility cupboard

W / wardrobe

WD / washer dryer

Refuse area

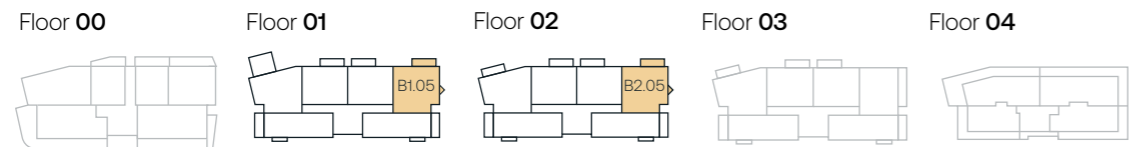
Reduced ceiling height

Style 11

2 bedroom

87.1 m² / 937 ft²

Plot: B1.05 / B2.05



Living / Dining / Kitchen	6300mm x 5782mm / 20'8" x 19'
Bedroom 1	3645mm x 3525mm / 12' x 11'7"
En-suite	
Bedroom 2	3982mm x 3100mm / 13'1" x 10'2"
Bathroom	
Balcony	5083mm x 1560mm / 16'8" x 5'2"

S / store
W / wardrobe
WD / washer dryer located in utility cupboard

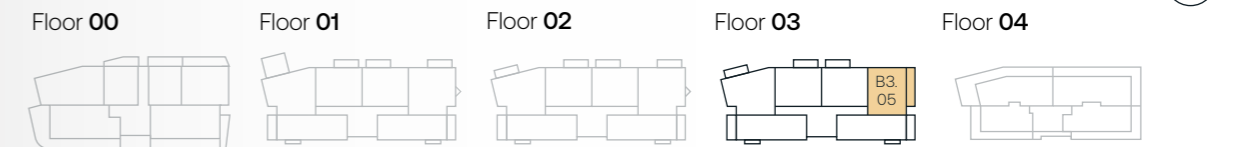
● Reduced ceiling height to floor 2 only

Style 12

2 bedroom

73.4 m² / 790 ft²

Plot: B3.05



Living / Dining / Kitchen	6162mm x 4527mm / 20'3" x 14'10"
Bedroom 1	4182mm x 3238mm / 13'8" x 10'8"
Bedroom 2	3850mm x 3100mm / 12'8" x 10'2"
Bathroom	
Balcony	7578mm x 1376mm / 24'10" x 4'5"

S / store
UC / utility cupboard
W / wardrobe
WD / washer dryer

Style 13

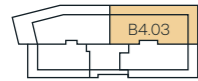
3 bedroom

88.3 m² / 950 ft²

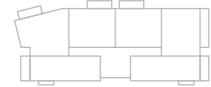
Plot: B4.03



Floor 04



Floor 03



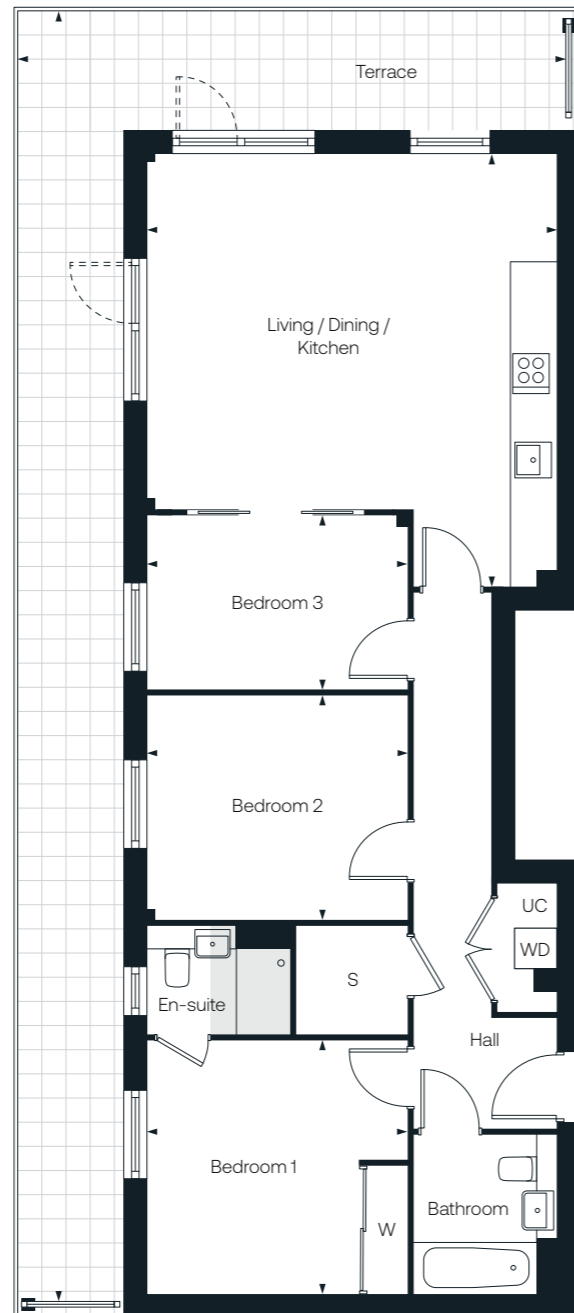
Floor 02



Floor 01



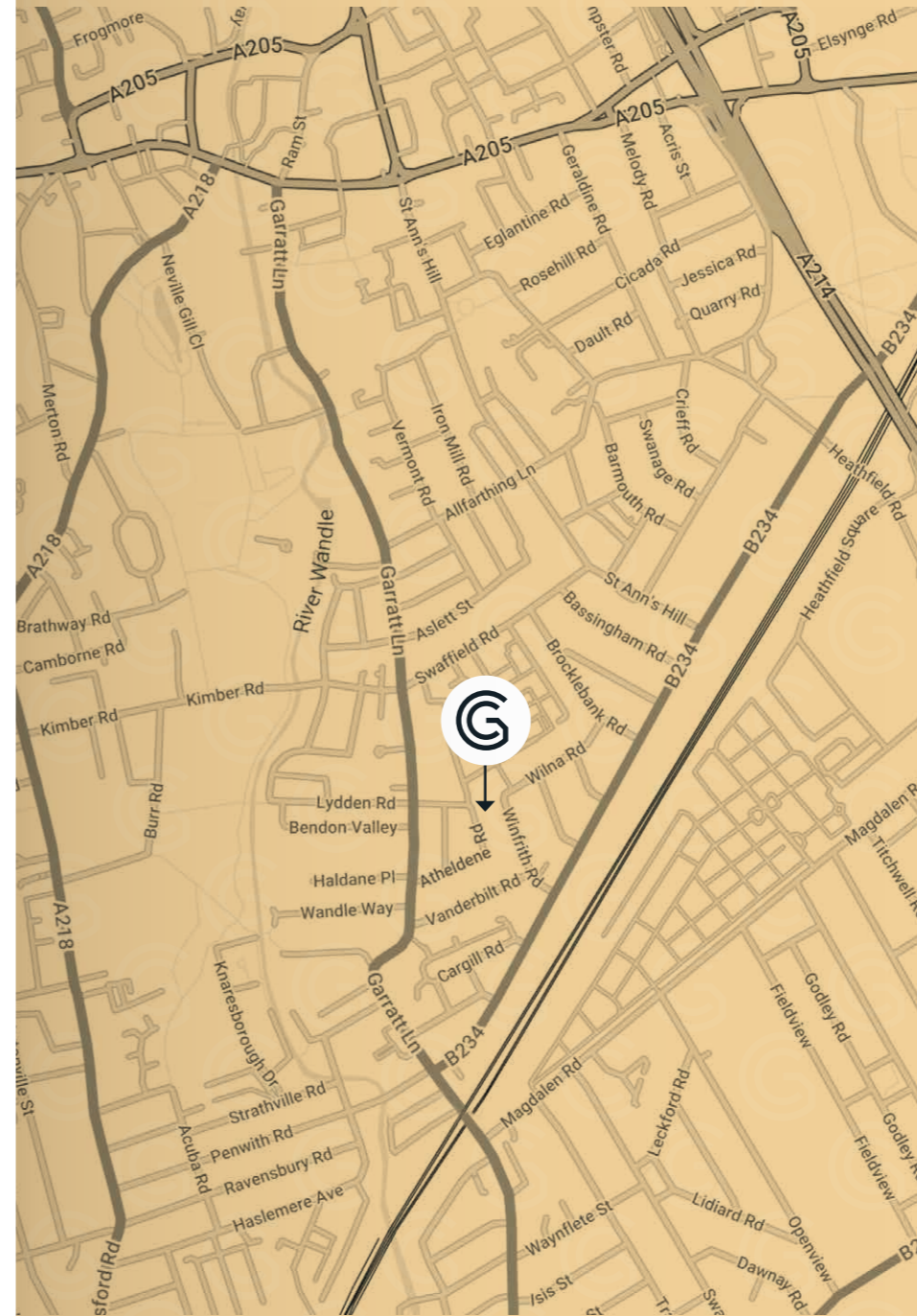
Floor 00



Living / Dining / Kitchen	6102mm x 5752mm / 20' x 18'10"
Bedroom 1	3652mm x 3525mm / 12' x 11'7"
En - Suite	
Bedroom 2	3652mm x 3150mm / 12' x 10'4"
Bedroom 3	3652mm x 2440mm / 12' x 8'
Bathroom	
Terrace	18179mm x 7731mm / 59'8" x 25'5"

S / store
UC / utility cupboard
W / wardrobe
WD / washer dryer

Reduced ceiling height



The Garratt Collection
 Atheldene Road
 SW18 3BZ

020 8498 6111
 thegarrattcollection
 @higginshomes.co.uk

Higgins Homes Plc
 One Langston Road
 Loughton, Essex
 IG10 3SD

020 8508 5555
 higginshomes.co.uk



Whilst these particulars and plans are prepared with all due care for the convenience of intending purchasers, the information contained herein is a preliminary guide only. Neither the vendors, nor their agents or any persons in their employ has any authority to make or give representation, warranty or guarantee [whether oral or written] in respect of, or in relation to the development or any part thereof.

The computer generated illustrations are drawn from plan and are indicative only of how the completed development will appear. The company employs a policy of continuous improvement and it reserves the right to alter or amend the specification as necessary and without prior notice. The Garratt Collection is a marketing name and will not be adopted as the postal address.



thegarrattcollection.co.uk

Higgins
HOMES